



EST. 1902

**J.P. WEIGAND & SONS INC.**

REALTORS®

*The Standard for Excellence.™*

## MARKET OVERVIEW >>

### South Central Kansas Home Sales Fell in May

Total home sales in South Central Kansas fell last month to 909 units, compared to 973 units in May 2014. Total sales volume was \$143.8 million, up from a year earlier.

The median sale price in May was \$139,900, up from \$128,000 a year earlier. Homes that sold in May were typically on the market for 23 days and sold for 98.5% of their list prices.

### South Central Kansas Active Listings Down at End of May

The total number of active listings in South Central Kansas at the end of May was 2,864 units, down from 3,101 at the same point in 2014. This represents a 3.2 months' supply of homes available for sale. The median list price of homes on the market at the end of May was \$151,900.

During May, a total of 942 contracts were written up from 900 in May 2014. At the end of the month, there were 1,510 contracts pending, compared to 1,456 at the end of May 2014.

### Your Association Working for You!

The South Central Kansas MLS statistical reports are one of the many benefits you receive from being a member of the REALTORS® of South Central Kansas. Through a partnership with the Kansas Association of REALTORS®, we will send you these reports each month to help you better serve your clients and promote your business.

Note: This information is based on information provided by the REALTORS® of South Central Kansas or South Central Kansas Multiple Listing Service, Inc. for the period indicated. Neither the REALTORS® of South Central Kansas nor the South Central Kansas Multiple Listing Service, Inc. guarantee or are in any way responsible for the accuracy of the data and the data that is provided may not reflect all real estate activity in the market.

Entire MLS System		May		
Summary Statistics		2015	2014	Change
Home Sales		<b>909</b>	973	-6.6%
Active Listings		<b>2,864</b>	3,101	-7.6%
Months' Supply		<b>3.2</b>	3.2	-1.1%
New Listings		<b>1,226</b>	1,392	-11.9%
Contracts Written		<b>942</b>	900	4.7%
Pending Contracts		<b>1,510</b>	1,456	3.7%
Sales Volume (1,000s)		<b>143,777</b>	142,250	1.1%
Average	Sale Price	<b>158,171</b>	146,197	8.2%
	List Price of Actives	<b>206,806</b>	195,523	5.8%
	Days on Market	<b>59</b>	68	-12.7%
	Percent of List	<b>97.2%</b>	97.4%	-0.2%
	Percent of Original	<b>95.3%</b>	95.1%	0.3%
Median	Sale Price	<b>139,900</b>	128,000	9.3%
	List Price of Actives	<b>151,900</b>	145,000	4.8%
	Days on Market	<b>23</b>	35	-34.3%
	Percent of List	<b>98.5%</b>	98.2%	0.4%
	Percent of Original	<b>97.5%</b>	97.0%	0.5%

## REPORT CONTENTS >>

- [Market Overview Statistics](#) – Page 2
- [Year-to-Date Statistics](#) – Page 3
- [Sold Listings Analysis](#) – Page 4
- [Active Listings Analysis](#) – Page 8
- [Months' Supply Analysis](#) – Page 12
- [New Listings Analysis](#) – Page 13
- [Contracts Written Analysis](#) – Page 16
- [Pending Contracts Analysis](#) – Page 20



## MARKET OVERVIEW STATISTICS

### SUMMARY >>

ENTIRE MLS SYSTEM  
BREAKDOWNS BY HOME TYPE  
AS OF 6/15/2015

May MLS Statistics By Property Type		2015			2014			2013		
		Total	Existing	New	Total	Existing	New	Total	Existing	New
Home Sales		<b>909</b>	<b>866</b>	<b>43</b>	973	926	47	865	823	42
Change from prior year		-6.6%	-6.5%	-8.5%	12.5%	12.5%	11.9%	13.4%	12.4%	35.5%
Active Listings		<b>2,864</b>	<b>2,587</b>	<b>277</b>	3,101	2,845	256	3,665	3,415	250
Change from prior year		-7.6%	-9.1%	8.2%	-15.4%	-16.7%	2.4%	-11.5%	-11.9%	-4.2%
Months' Supply		<b>3.2</b>	<b>3.0</b>	<b>6.4</b>	3.2	3.1	5.4	4.2	4.1	6.0
Change from prior year		-1.1%	-2.8%	18.3%	-24.8%	-26.0%	-8.5%	-21.9%	-21.7%	-29.3%
New Listings		<b>1,226</b>	<b>1,183</b>	<b>43</b>	1,392	1,325	67	1,320	1,257	63
Change from prior year		-11.9%	-10.7%	-35.8%	5.5%	5.4%	6.3%	6.4%	5.1%	40.0%
Contracts Written		<b>942</b>	<b>901</b>	<b>41</b>	900	846	54	900	834	66
Change from prior year		4.7%	6.5%	-24.1%	0.0%	1.4%	-18.2%	15.8%	12.7%	78.4%
Pending Contracts		<b>1,510</b>	<b>1,382</b>	<b>128</b>	1,456	1,342	114	N/A	N/A	N/A
Change from prior year		3.7%	3.0%	12.3%	N/A	N/A	N/A	N/A	N/A	N/A
Sales Volume (1,000s)		<b>143,777</b>	<b>132,010</b>	<b>11,767</b>	142,250	127,910	14,340	123,017	111,713	11,303
Change from prior year		1.1%	3.2%	-17.9%	15.6%	14.5%	26.9%	21.5%	18.2%	69.1%
Average	Sale Price	<b>158,171</b>	<b>152,436</b>	<b>273,660</b>	146,197	138,132	305,104	142,216	135,739	269,126
	Change from prior year	8.2%	10.4%	-10.3%	2.8%	1.8%	13.4%	7.2%	5.1%	24.8%
	List Price of Actives	<b>206,806</b>	<b>194,001</b>	<b>324,779</b>	195,523	185,524	304,023	0	0	0
	Change from prior year	5.8%	4.6%	6.8%	N/A	N/A	N/A	N/A	N/A	N/A
	Days on Market	<b>59</b>	<b>56</b>	<b>111</b>	68	65	114	83	82	105
	Change from prior year	-12.7%	-13.5%	-2.5%	-18.6%	-20.3%	8.6%	-1.5%	0.0%	-24.9%
Percent of List		<b>97.2%</b>	<b>96.9%</b>	<b>103.0%</b>	97.4%	97.1%	101.6%	97.1%	96.9%	101.5%
	Change from prior year	-0.2%	-0.3%	1.3%	0.3%	0.3%	0.2%	0.5%	0.5%	-0.2%
	Percent of Original	<b>95.3%</b>	<b>94.9%</b>	<b>104.1%</b>	95.1%	94.7%	102.1%	94.5%	94.1%	102.0%
Change from prior year	0.3%	0.2%	2.0%	0.6%	0.6%	0.1%	1.1%	1.1%	-0.2%	
Median	Sale Price	<b>139,900</b>	<b>134,900</b>	<b>235,420</b>	128,000	124,000	243,818	127,900	124,900	244,368
	Change from prior year	9.3%	8.8%	-3.4%	0.1%	-0.7%	-0.2%	6.6%	5.0%	16.4%
	List Price of Actives	<b>151,900</b>	<b>139,000</b>	<b>269,000</b>	145,000	135,000	257,025	0	0	0
	Change from prior year	4.8%	3.0%	4.7%	N/A	N/A	N/A	N/A	N/A	N/A
	Days on Market	<b>23</b>	<b>23</b>	<b>122</b>	35	35	62	43	43	69
	Change from prior year	-34.3%	-35.7%	96.8%	-18.6%	-18.6%	-9.5%	0.0%	2.4%	-50.4%
Percent of List		<b>98.5%</b>	<b>98.4%</b>	<b>100.0%</b>	98.2%	97.9%	100.0%	98.2%	98.1%	100.5%
	Change from prior year	0.4%	0.5%	0.0%	-0.1%	-0.2%	-0.5%	0.5%	0.5%	0.4%
Percent of Original		<b>97.5%</b>	<b>97.4%</b>	<b>101.2%</b>	97.0%	96.6%	100.8%	96.5%	96.2%	100.6%
Change from prior year		0.5%	0.8%	0.4%	0.5%	0.5%	0.2%	0.4%	0.1%	-0.7%



# YEAR-TO-DATE STATISTICS

**SUMMARY** >>

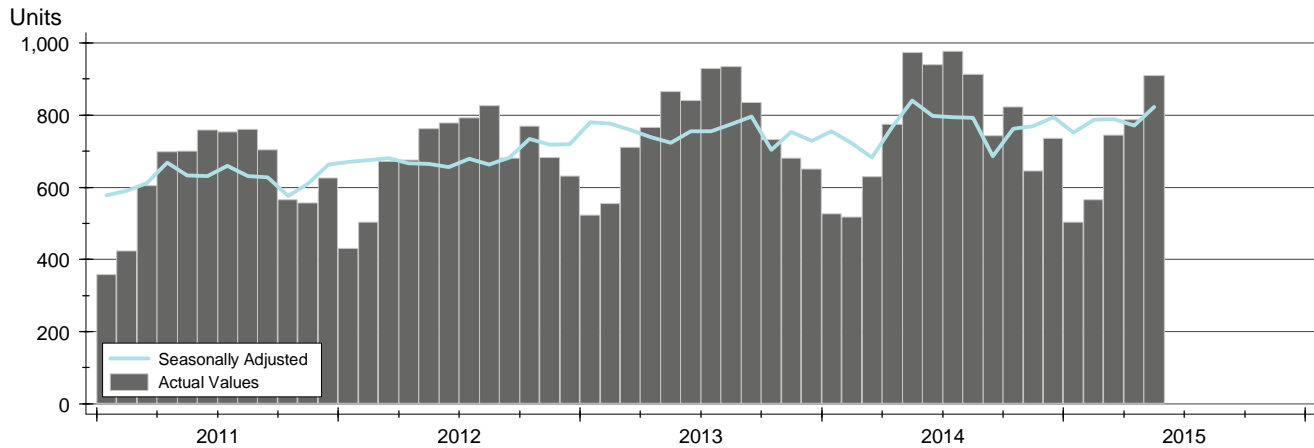
ENTIRE MLS SYSTEM  
YTD BREAKDOWNS BY HOME TYPE  
AS OF 6/15/2015

Year-to-Date Activity By Property Type		2015			2014			2013		
		Total	Existing	New	Total	Existing	New	Total	Existing	New
Home Sales		<b>3,509</b>	<b>3,318</b>	<b>191</b>	3,422	3,212	210	3,420	3,256	164
Change from prior year		2.5%	3.3%	-9.0%	0.1%	-1.4%	28.0%	12.4%	11.6%	30.2%
New Listings		<b>5,738</b>	<b>5,440</b>	<b>298</b>	5,827	5,540	287	5,881	5,628	253
Change from prior year		-1.5%	-1.8%	3.8%	-0.9%	-1.6%	13.4%	-1.5%	-2.5%	28.4%
Contracts Written		<b>4,179</b>	<b>3,964</b>	<b>215</b>	3,980	3,754	226	3,923	3,667	256
Change from prior year		5.0%	5.6%	-4.9%	1.5%	2.4%	-11.7%	10.9%	9.5%	36.2%
Sales Volume (1,000s)		<b>520,253</b>	<b>465,925</b>	<b>54,328</b>	478,184	418,094	60,090	458,137	415,318	42,819
Change from prior year		8.8%	11.4%	-9.6%	4.4%	0.7%	40.3%	20.3%	19.5%	28.8%
Average	Sale Price	<b>148,262</b>	<b>140,423</b>	<b>284,441</b>	139,738	130,166	286,145	133,958	127,555	261,093
	Change from prior year	6.1%	7.9%	-0.6%	4.3%	2.0%	9.6%	7.1%	7.1%	-1.1%
	Days on Market	<b>67</b>	<b>65</b>	<b>100</b>	76	75	97	85	85	94
	Change from prior year	-12.4%	-13.4%	3.5%	-10.5%	-11.6%	3.0%	-2.1%	-1.8%	-9.2%
Percent of List		<b>97.0%</b>	<b>96.6%</b>	<b>102.4%</b>	96.7%	96.3%	102.0%	96.5%	96.1%	102.3%
	Change from prior year	0.3%	0.3%	0.4%	0.3%	0.2%	-0.2%	0.8%	0.8%	0.1%
Percent of Original		<b>94.4%</b>	<b>93.9%</b>	<b>102.9%</b>	93.7%	93.1%	102.6%	93.0%	92.5%	102.8%
	Change from prior year	0.8%	0.9%	0.3%	0.7%	0.6%	-0.2%	1.2%	1.2%	0.3%
Median	Sale Price	<b>129,900</b>	<b>125,000</b>	<b>243,438</b>	119,000	112,000	247,180	116,000	111,200	228,060
	Change from prior year	9.2%	11.6%	-1.5%	2.6%	0.7%	8.4%	6.4%	6.1%	8.0%
	Days on Market	<b>37</b>	<b>36</b>	<b>62</b>	42	42	42	50	50	56
	Change from prior year	-11.9%	-14.3%	47.6%	-16.0%	-16.0%	-24.3%	0.0%	1.0%	-21.3%
Percent of List		<b>98.1%</b>	<b>97.9%</b>	<b>100.0%</b>	97.9%	97.6%	100.0%	97.7%	97.5%	100.5%
	Change from prior year	0.3%	0.4%	0.0%	0.1%	0.0%	-0.5%	0.6%	0.6%	0.5%
Percent of Original		<b>96.7%</b>	<b>96.3%</b>	<b>100.6%</b>	96.2%	95.8%	100.6%	95.6%	95.2%	101.3%
	Change from prior year	0.5%	0.5%	0.1%	0.7%	0.6%	-0.7%	1.0%	0.9%	1.2%

**SOLD LISTINGS ANALYSIS**

**HISTORY** >>

**ENTIRE MLS SYSTEM  
ALL HOMES  
AS OF 6/15/2015**



**SUMMARY** >>

Summary Statistics for Sold Listings		May			Year-to-Date		
		2015	2014	Change	2015	2014	Change
Sold Listings		<b>909</b>	973	-6.6%	<b>3,509</b>	3,422	2.5%
Volume (1,000s)		<b>143,777</b>	142,250	1.1%	<b>520,253</b>	478,184	8.8%
Average	Sale Price	<b>158,171</b>	146,197	8.2%	<b>148,262</b>	139,738	6.1%
	Days on Market	<b>59</b>	68	-12.7%	<b>67</b>	76	-12.4%
	Percent of List	<b>97.2%</b>	97.4%	-0.2%	<b>97.0%</b>	96.7%	0.3%
	Percent of Original	<b>95.3%</b>	95.1%	0.3%	<b>94.4%</b>	93.7%	0.8%
Median	Sale Price	<b>139,900</b>	128,000	9.3%	<b>129,900</b>	119,000	9.2%
	Days on Market	<b>23</b>	35	-34.3%	<b>37</b>	42	-11.9%
	Percent of List	<b>98.5%</b>	98.2%	0.4%	<b>98.1%</b>	97.9%	0.3%
	Percent of Original	<b>97.5%</b>	97.0%	0.5%	<b>96.7%</b>	96.2%	0.5%

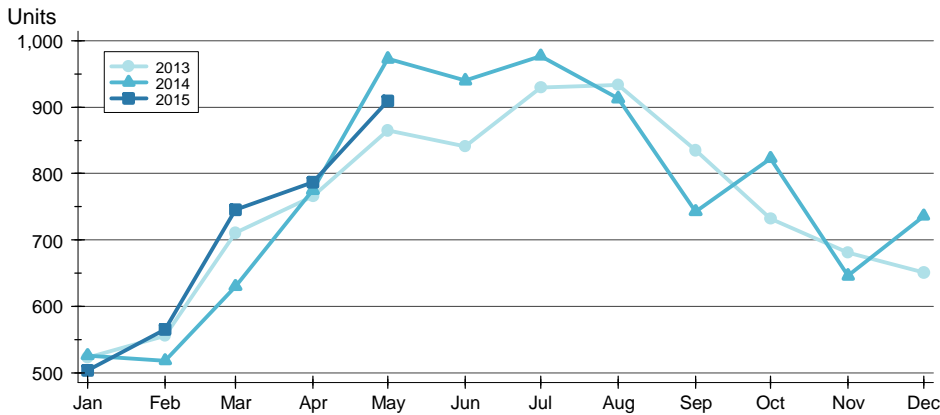
A total of 909 homes sold in South Central Kansas in May, down from 973 units in May 2014. Total sales volume rose to \$143.8 million compared to \$142.2 million in the previous year.

The median sales price in May was \$139,900, up 9.3% compared to the prior year. Median days on market was 23 days, down from 31 days in April, and down from 35 in May 2014.

**SOLD LISTINGS ANALYSIS**

**BY MONTH** >>

**ENTIRE MLS SYSTEM  
ALL HOMES  
AS OF 6/15/2015**



Month	2013	2014	2015
January	523	526	503
February	555	518	565
March	711	630	745
April	766	775	787
May	865	973	909
June	841	940	-
July	930	977	-
August	934	913	-
September	835	743	-
October	732	823	-
November	681	646	-
December	651	736	-

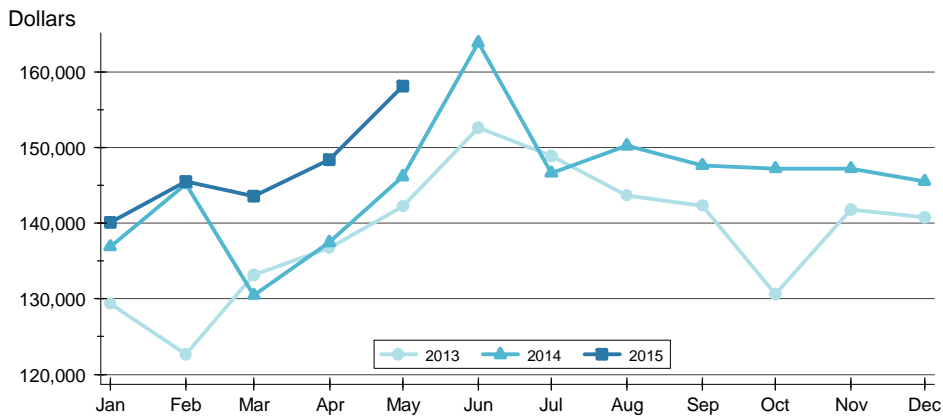
**BY PRICE RANGE** >>

Price Range	Sales			Sale Price		Days on Market		Price as % of List		Price as % of Orig.	
	Number	Percent	Volume	Average	Median	Average	Median	Average	Median	Average	Median
Below \$25,000	29	3.2%	530	18,261	19,000	69	31	87.1%	95.5%	79.8%	83.3%
\$25,000-\$49,999	64	7.0%	2,446	38,215	39,025	70	44	90.2%	91.7%	83.9%	86.7%
\$50,000-\$99,999	198	21.8%	14,786	74,674	76,000	69	32	96.4%	97.7%	94.5%	95.5%
\$100,000-\$124,999	91	10.0%	10,389	114,168	115,000	49	25	97.4%	98.4%	95.9%	97.5%
\$125,000-\$149,999	129	14.2%	17,705	137,248	136,500	33	12	99.1%	100.0%	98.3%	98.9%
\$150,000-\$174,999	102	11.2%	16,508	161,844	161,500	47	14	98.5%	98.9%	97.7%	98.2%
\$175,000-\$199,999	75	8.3%	13,978	186,377	186,000	55	20	98.4%	99.4%	97.1%	97.7%
\$200,000-\$249,999	98	10.8%	21,808	222,527	221,750	69	25	98.6%	99.6%	97.1%	97.8%
\$250,000-\$299,999	47	5.2%	12,763	271,545	268,000	41	27	98.9%	98.6%	98.1%	98.1%
\$300,000 and up	76	8.4%	32,865	432,437	379,450	95	50	97.6%	97.5%	95.5%	97.0%
All price ranges	909	100.0%	143,777	158,171	139,900	59	23	97.2%	98.5%	95.3%	97.5%

**SOLD LISTINGS ANALYSIS**

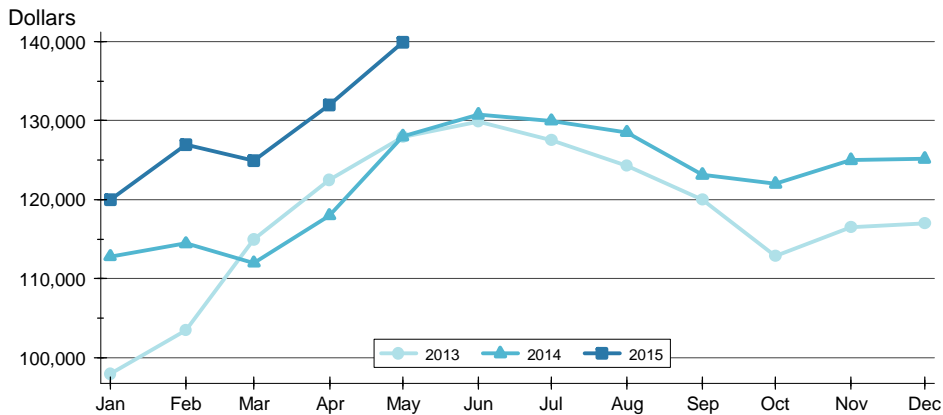
**ENTIRE MLS SYSTEM  
ALL HOMES  
AS OF 6/15/2015**

**AVERAGE PRICE** >>



Month	2013	2014	2015
January	129,378	136,903	140,105
February	122,628	145,147	145,560
March	133,151	130,486	143,571
April	136,719	137,459	148,413
May	142,216	146,197	158,171
June	152,602	163,892	163,892
July	148,946	146,654	146,654
August	143,674	150,241	150,241
September	142,318	147,673	147,673
October	130,659	147,236	147,236
November	141,835	147,247	147,247
December	140,787	145,532	145,532

**MEDIAN PRICE** >>

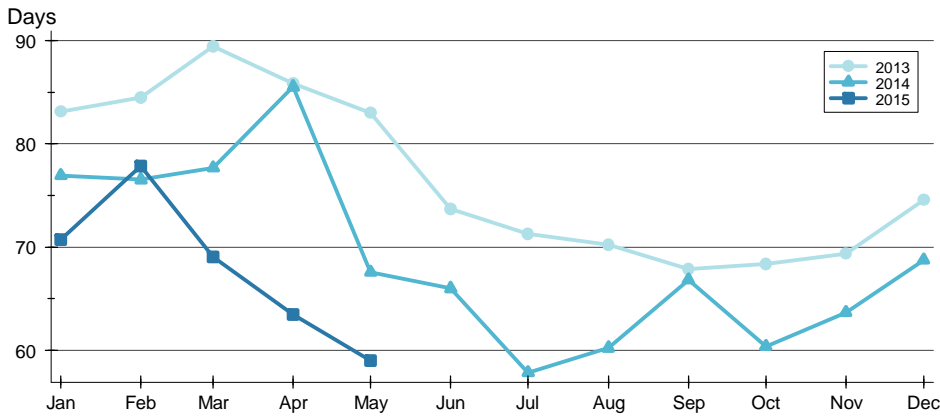


Month	2013	2014	2015
January	98,000	112,800	120,000
February	103,500	114,450	126,950
March	115,000	112,000	124,900
April	122,513	118,000	132,000
May	127,900	128,000	139,900
June	129,900	130,750	130,750
July	127,500	130,000	130,000
August	124,250	128,500	128,500
September	120,000	123,130	123,130
October	112,825	122,000	122,000
November	116,500	125,000	125,000
December	117,000	125,150	125,150

**SOLD LISTINGS ANALYSIS**

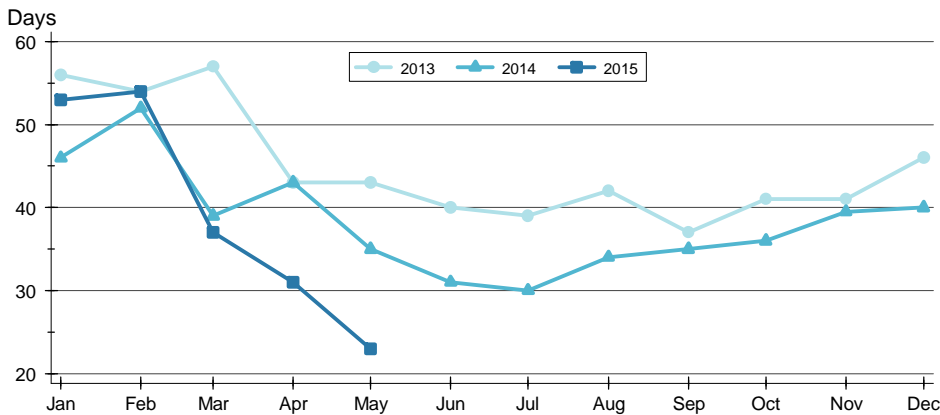
**ENTIRE MLS SYSTEM  
ALL HOMES  
AS OF 6/15/2015**

**AVERAGE DOM** >>



Month	2013	2014	2015
January	83	77	71
February	85	77	78
March	89	78	69
April	86	86	63
May	83	68	59
June	74	66	
July	71	58	
August	70	60	
September	68	67	
October	68	60	
November	69	64	
December	75	69	

**MEDIAN DOM** >>



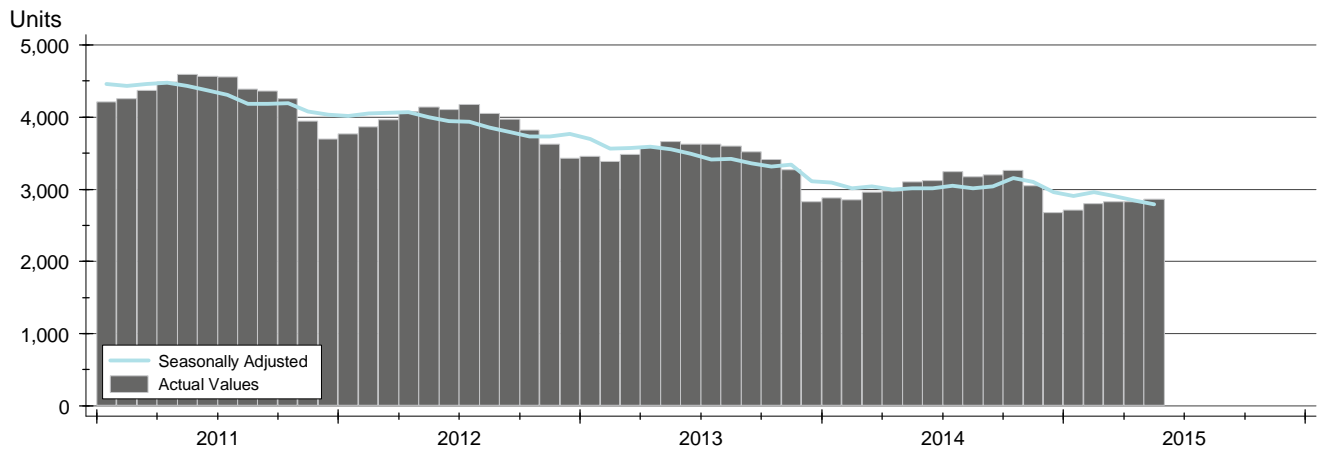
Month	2013	2014	2015
January	56	46	53
February	54	52	54
March	57	39	37
April	43	43	31
May	43	35	23
June	40	31	
July	39	30	
August	42	34	
September	37	35	
October	41	36	
November	41	40	
December	46	40	



**ACTIVE LISTINGS ANALYSIS**

**HISTORY** >>

**ENTIRE MLS SYSTEM  
ALL HOMES  
AS OF 6/15/2015**



**SUMMARY** >>

Summary Statistics for Active Listings		End of May		
		2015	2014	Change
Active Listings		<b>2,864</b>	3,101	-7.6%
Months' Supply		<b>3.2</b>	3.2	-1.1%
Volume (1,000s)		<b>592,292</b>	606,316	-2.3%
Average	List Price	<b>206,806</b>	195,523	5.8%
	Days on Market	<b>101</b>	97	4.0%
	Percent of Original	<b>97.4%</b>	97.8%	-0.4%
Median	List Price	<b>151,900</b>	145,000	4.8%
	Days on Market	<b>60</b>	54	11.1%
	Percent of Original	<b>100.0%</b>	100.0%	0.0%

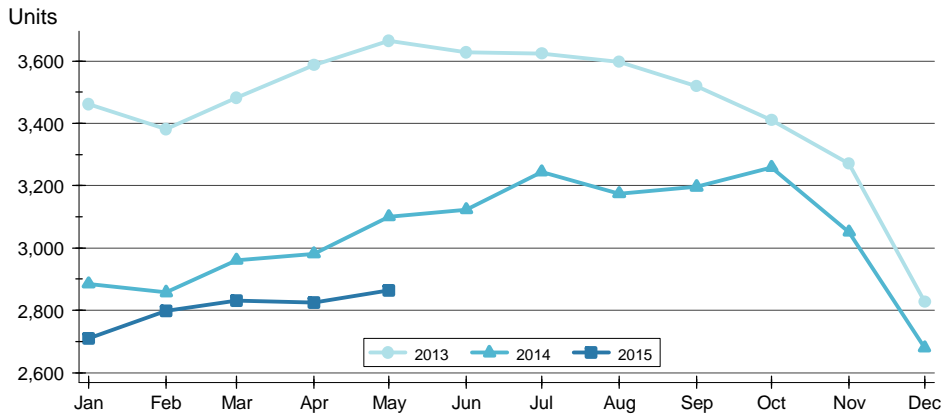
A total of 2,864 homes were available for sale in South Central Kansas at the end of May. This represents a 3.2 months' supply of active listings.

The median list price of homes on the market at the end of May was \$151,900, up 4.8% from 2014. The typical time on market for active listings was 60 days, up from 54 days a year earlier.

**ACTIVE LISTINGS ANALYSIS**

**BY MONTH** >>

**ENTIRE MLS SYSTEM  
ALL HOMES  
AS OF 6/15/2015**



Month	2013	2014	2015
January	3,461	2,885	2,710
February	3,382	2,857	2,798
March	3,483	2,961	2,831
April	3,586	2,982	2,825
May	3,665	3,101	2,864
June	3,628	3,123	
July	3,624	3,245	
August	3,597	3,175	
September	3,519	3,196	
October	3,411	3,259	
November	3,270	3,051	
December	2,827	2,680	

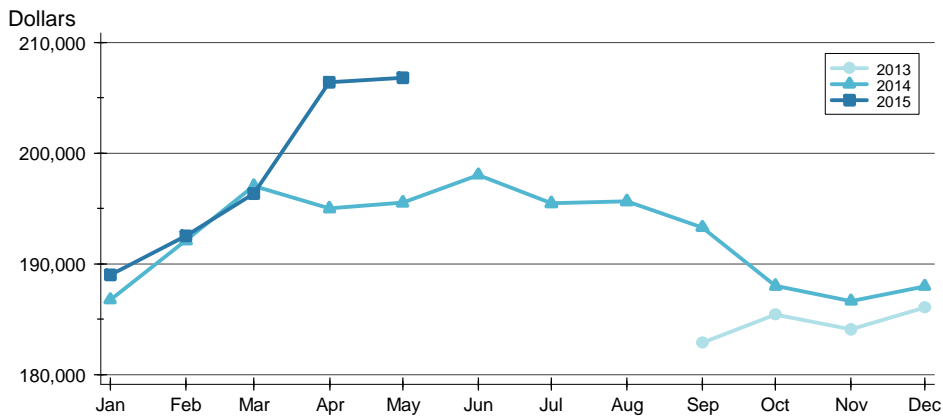
**BY PRICE RANGE** >>

Price Range	Active Listings			Months' Supply	List Price		Days on Market		List as % Orig.	
	Number	Percent	Volume		Average	Median	Average	Median	Average	Median
Below \$25,000	33	1.2%	412	1.1	12,500	15,000	90	50	95.4%	100.0%
\$25,000-\$49,999	245	8.6%	9,745	3.8	39,777	40,000	117	72	93.7%	100.0%
\$50,000-\$99,999	722	25.2%	54,020	3.6	74,820	74,900	102	68	96.7%	100.0%
\$100,000-\$124,999	150	5.2%	17,175	1.6	114,502	115,000	77	39	97.6%	100.0%
\$125,000-\$149,999	257	9.0%	35,414	2.0	137,799	138,900	82	47	97.6%	100.0%
\$150,000-\$174,999	205	7.2%	33,430	2.0	163,074	162,500	67	38	98.4%	100.0%
\$175,000-\$199,999	205	7.2%	38,491	2.7	187,759	188,650	117	60	98.8%	100.0%
\$200,000-\$249,999	266	9.3%	60,142	2.7	226,096	225,000	96	56	98.2%	100.0%
\$250,000-\$299,999	242	8.4%	66,836	5.1	276,182	275,000	94	59	99.1%	100.0%
\$300,000 and up	504	17.6%	269,388	6.6	534,499	421,750	130	79	98.2%	100.0%
All price ranges	2,864	100.0%	592,292	3.2	206,806	151,900	101	60	97.4%	100.0%

**ACTIVE LISTINGS ANALYSIS**

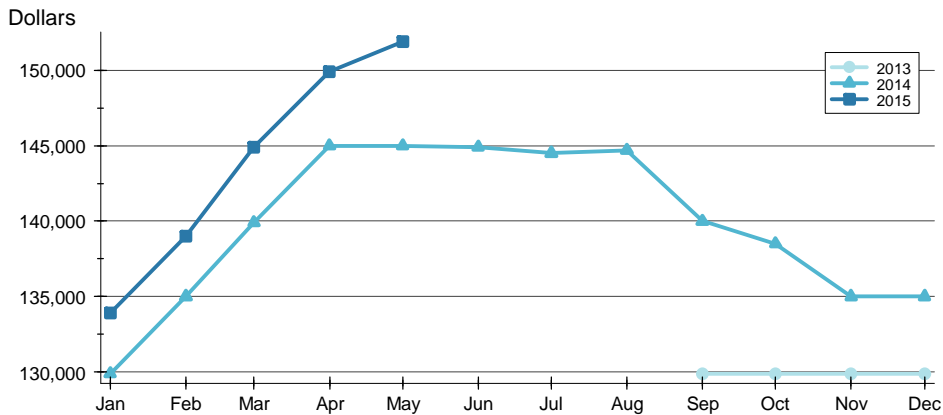
**ENTIRE MLS SYSTEM  
ALL HOMES  
AS OF 6/15/2015**

**AVERAGE PRICE** >>



Month	2013	2014	2015
January	N/A	186,754	188,970
February	N/A	192,103	192,547
March	N/A	197,034	196,355
April	N/A	194,992	206,422
May	N/A	195,523	206,806
June	N/A	198,032	
July	N/A	195,462	
August	N/A	195,631	
September	182,882	193,291	
October	185,385	188,003	
November	184,051	186,628	
December	186,034	187,982	

**MEDIAN PRICE** >>

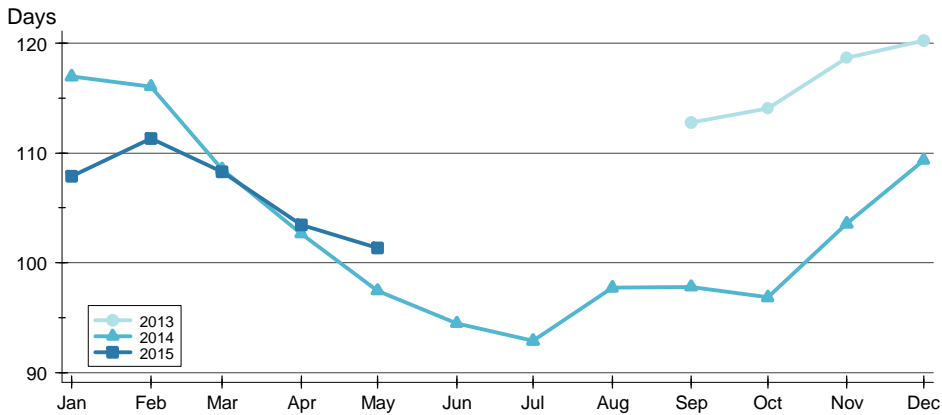


Month	2013	2014	2015
January	N/A	129,900	133,900
February	N/A	135,000	139,000
March	N/A	139,900	144,900
April	N/A	145,000	149,900
May	N/A	145,000	151,900
June	N/A	144,900	
July	N/A	144,500	
August	N/A	144,700	
September	129,900	140,000	
October	129,900	138,500	
November	129,900	135,000	
December	129,900	135,000	

**ACTIVE LISTINGS ANALYSIS**

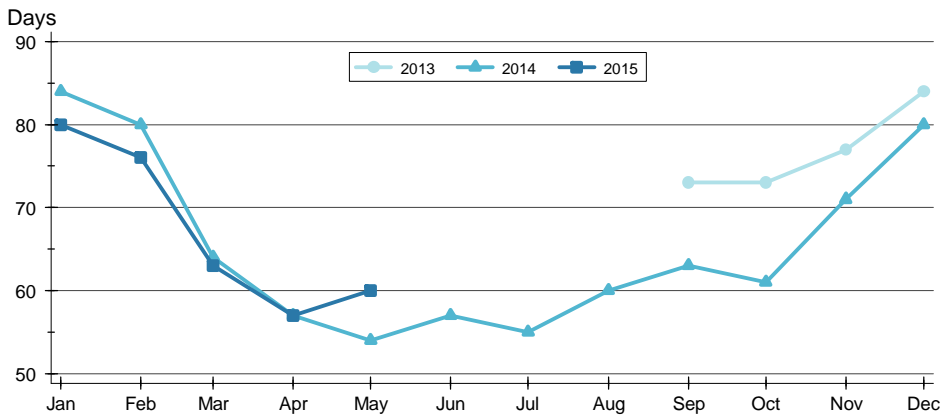
**ENTIRE MLS SYSTEM  
ALL HOMES  
AS OF 6/15/2015**

**AVERAGE DOM** >>



Month	2013	2014	2015
January	N/A	117	108
February	N/A	116	111
March	N/A	109	108
April	N/A	103	103
May	N/A	97	101
June	N/A	94	
July	N/A	93	
August	N/A	98	
September	113	98	
October	114	97	
November	119	104	
December	120	109	

**MEDIAN DOM** >>

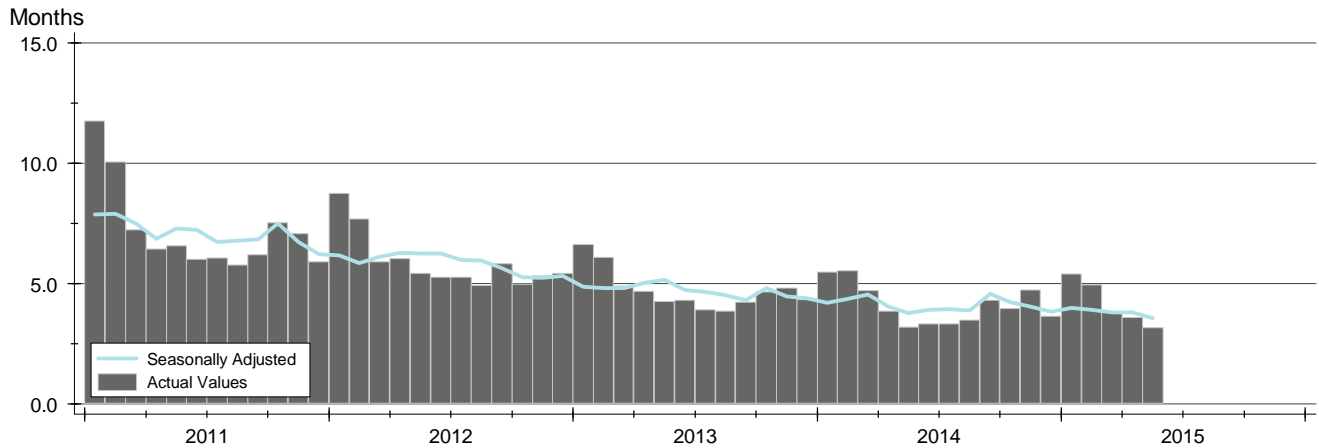


Month	2013	2014	2015
January	N/A	84	80
February	N/A	80	76
March	N/A	64	63
April	N/A	57	57
May	N/A	54	60
June	N/A	57	
July	N/A	55	
August	N/A	60	
September	73	63	
October	73	61	
November	77	71	
December	84	80	

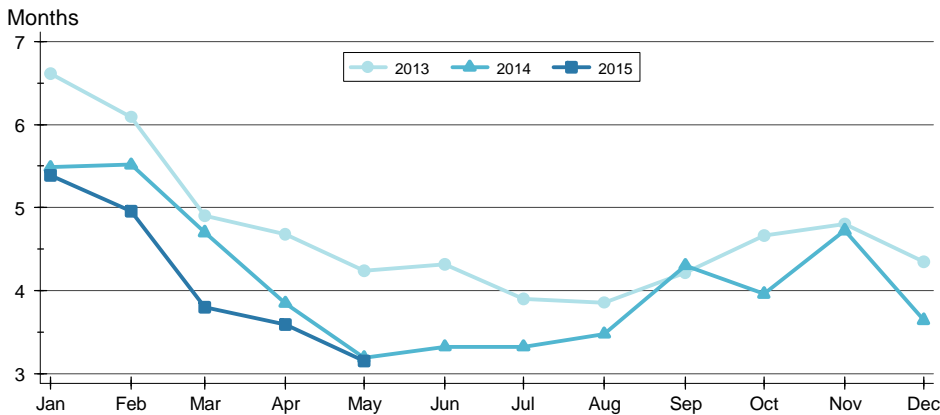
**MONTHS' SUPPLY ANALYSIS**

**HISTORY** >>

**ENTIRE MLS SYSTEM  
ALL HOMES  
AS OF 6/15/2015**



**BY MONTH** >>



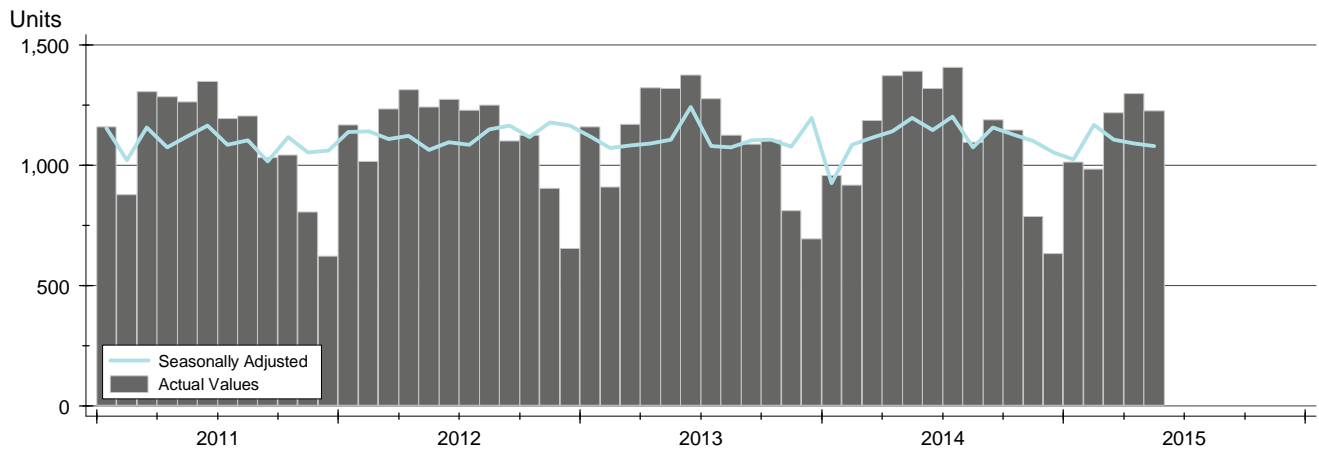
Month	2013	2014	2015
January	6.6	5.5	5.4
February	6.1	5.5	5.0
March	4.9	4.7	3.8
April	4.7	3.8	3.6
May	4.2	3.2	3.2
June	4.3	3.3	3.3
July	3.9	3.3	3.3
August	3.9	3.5	3.5
September	4.2	4.3	4.3
October	4.7	4.0	4.0
November	4.8	4.7	4.7
December	4.3	3.6	3.6



**NEW LISTINGS ANALYSIS**

**HISTORY** >>

**ENTIRE MLS SYSTEM  
ALL HOMES  
AS OF 6/15/2015**



**SUMMARY** >>

Summary Statistics for New Listings		2015	May 2014	Change
Current Month	New Listings	<b>1,226</b>	1,392	-11.9%
	Volume (1,000s)	<b>209,617</b>	229,853	-8.8%
	Average List Price	<b>170,976</b>	165,125	3.5%
	Median List Price	<b>139,900</b>	135,000	3.6%
YTD	New Listings	<b>5,738</b>	5,827	-1.5%
	Volume (1,000s)	<b>996,253</b>	942,629	5.7%
	Average List Price	<b>173,624</b>	161,769	7.3%
	Median List Price	<b>139,900</b>	132,500	5.6%

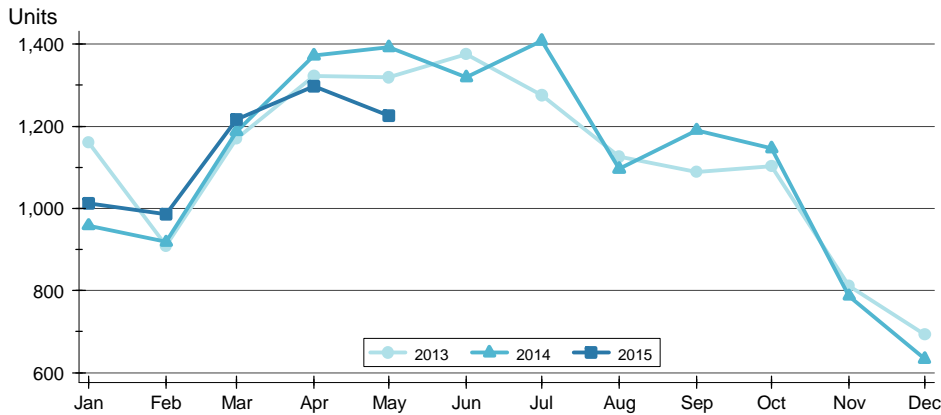
A total of 1,226 new listings were added in South Central Kansas during May, down 11.9% from the same month in 2014. Year-to-date South Central Kansas has seen 5,738 new listings.

The median list price of these homes was \$139,900 up from \$135,000 in 2014.

**NEW LISTINGS ANALYSIS**

**BY MONTH** »

**ENTIRE MLS SYSTEM  
ALL HOMES  
AS OF 6/15/2015**



Month	2013	2014	2015
January	1,160	958	1,012
February	909	918	985
March	1,170	1,187	1,217
April	1,322	1,372	1,298
May	1,320	1,392	1,226
June	1,375	1,319	
July	1,276	1,408	
August	1,126	1,096	
September	1,089	1,190	
October	1,103	1,146	
November	811	787	
December	693	633	

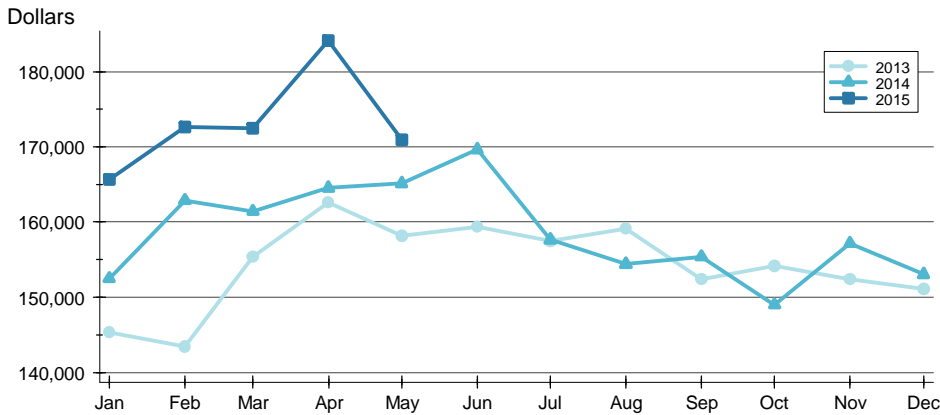
**BY PRICE RANGE** »

Price Range	New Listings			List Price	
	Number	Percent	Volume	Average	Median
Below \$25,000	28	2.3%	288	10,303	5,825
\$25,000-\$49,999	80	6.5%	3,067	38,333	39,450
\$50,000-\$99,999	258	21.0%	19,993	77,493	79,000
\$100,000-\$124,999	114	9.3%	13,129	115,164	115,000
\$125,000-\$149,999	159	13.0%	21,814	137,197	135,000
\$150,000-\$174,999	131	10.7%	21,287	162,497	160,000
\$175,000-\$199,999	94	7.7%	17,611	187,350	185,000
\$200,000-\$249,999	102	8.3%	22,947	224,967	223,450
\$250,000-\$299,999	88	7.2%	24,079	273,623	269,900
\$300,000 and up	120	9.8%	56,511	470,927	427,000
All price ranges	1,226	100.0%	209,617	170,976	139,900

**NEW LISTINGS ANALYSIS**

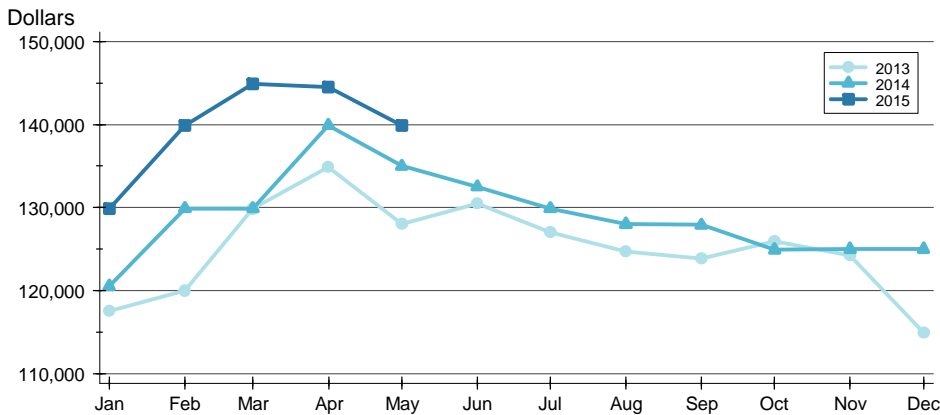
**ENTIRE MLS SYSTEM  
ALL HOMES  
AS OF 6/15/2015**

**AVERAGE PRICE** >>



Month	2013	2014	2015
January	145,290	152,483	165,656
February	143,485	162,886	172,612
March	155,340	161,443	172,470
April	162,572	164,531	184,128
May	158,132	165,125	170,976
June	159,334	169,644	170,976
July	157,505	157,654	157,654
August	159,068	154,414	154,414
September	152,416	155,384	155,384
October	154,130	148,987	148,987
November	152,376	157,185	157,185
December	151,096	153,033	153,033

**MEDIAN PRICE** >>

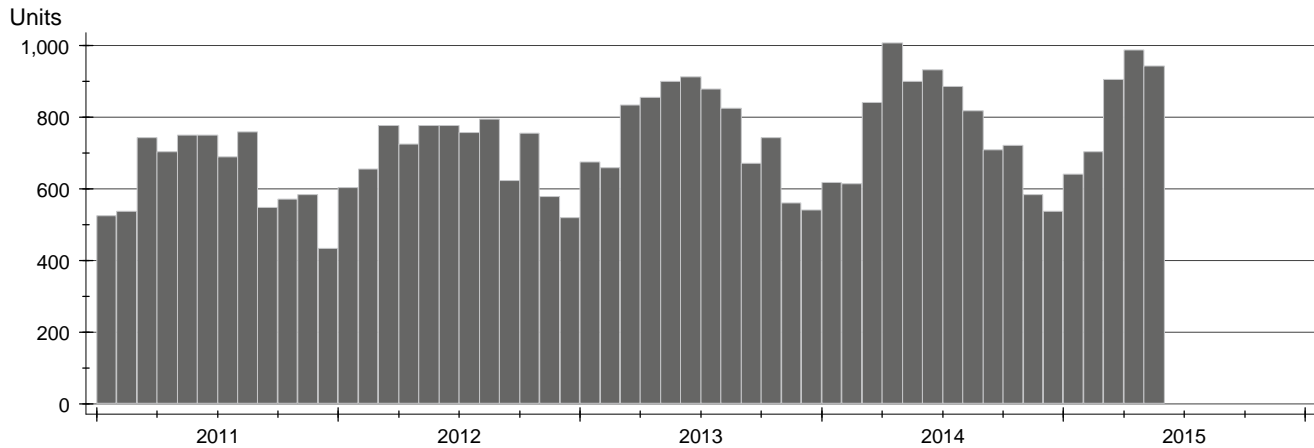


Month	2013	2014	2015
January	117,500	120,500	129,900
February	120,000	129,900	139,900
March	129,900	129,900	144,900
April	134,900	139,900	144,500
May	128,000	135,000	139,900
June	130,450	132,500	132,500
July	127,000	129,900	129,900
August	124,700	128,000	128,000
September	123,850	127,900	127,900
October	125,950	124,900	124,900
November	124,250	125,000	125,000
December	114,900	125,000	125,000

**CONTRACTS WRITTEN ANALYSIS**

**HISTORY** >>

**ENTIRE MLS SYSTEM  
ALL HOMES  
AS OF 6/15/2015**



**SUMMARY** >>

Summary Statistics for Contracts Written		May			Year-to-Date		
		2015	2014	Change	2015	2014	Change
Contracts Written		<b>942</b>	900	4.7%	<b>4,179</b>	3,980	5.0%
Volume (1,000s)		<b>145,656</b>	145,535	0.1%	<b>662,886</b>	610,289	8.6%
Average	List Price	<b>154,624</b>	161,706	-4.4%	<b>158,623</b>	153,339	3.4%
	Days on Market	<b>61</b>	60	2.8%	<b>64</b>	72	-10.9%
	Percent of Original	<b>96.2%</b>	96.3%	0.0%	<b>95.3%</b>	94.6%	0.8%
Median	List Price	<b>130,000</b>	137,500	-5.5%	<b>135,000</b>	129,900	3.9%
	Days on Market	<b>26</b>	29	-8.8%	<b>31</b>	37	-16.2%
	Percent of Original	<b>100.0%</b>	97.2%	2.9%	<b>97.7%</b>	96.6%	1.2%

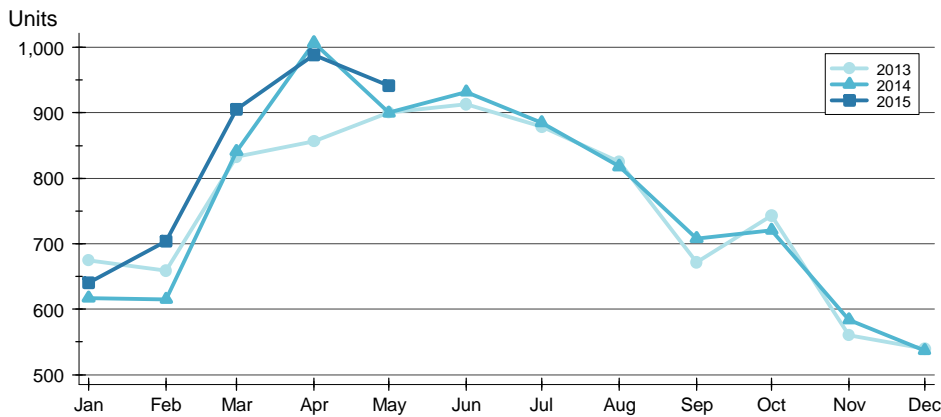
A total of 942 contracts for sale were written in South Central Kansas during the month of May, up from 900 in 2014. The median list price of these homes was \$130,000, down from \$137,500 the prior year.

Half of the homes that went under contract in May were on the market less than 26 days, compared to 29 days in May 2014.

**CONTRACTS WRITTEN ANALYSIS**

ENTIRE MLS SYSTEM  
ALL HOMES  
AS OF 6/15/2015

**BY MONTH** >>



Month	2013	2014	2015
January	675	617	640
February	659	615	704
March	833	841	905
April	856	1,007	988
May	900	900	942
June	913	932	
July	879	885	
August	825	818	
September	672	708	
October	743	721	
November	560	584	
December	540	537	

**BY PRICE RANGE** >>

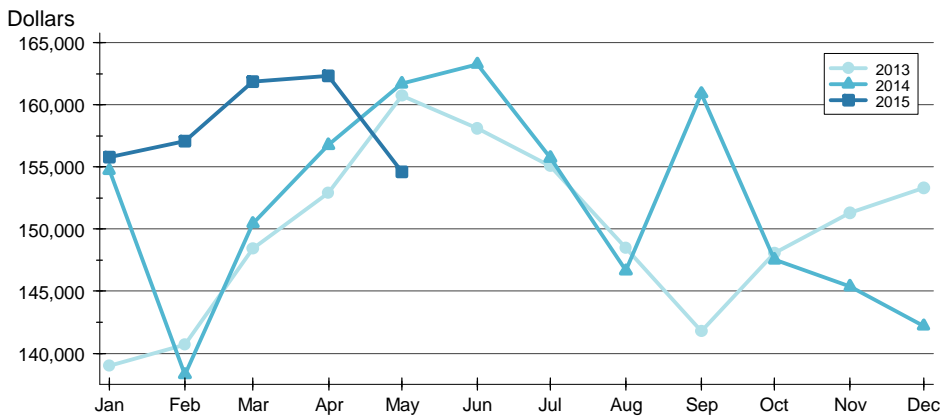
Price Range	Contracts Written			List Price		Days on Market		List as % Orig.	
	Number	Percent	Volume	Average	Median	Average	Median	Average	Median
Below \$25,000	18	1.9%	311	17,257	18,575	27	17	96.8%	100.0%
\$25,000-\$49,999	64	6.8%	2,627	41,044	42,900	77	34	83.7%	89.1%
\$50,000-\$99,999	210	22.3%	16,036	76,361	75,000	81	38	95.1%	99.5%
\$100,000-\$124,999	107	11.4%	12,261	114,585	114,900	41	17	97.8%	100.0%
\$125,000-\$149,999	141	15.0%	19,295	136,845	137,500	33	13	98.4%	100.0%
\$150,000-\$174,999	88	9.3%	14,340	162,958	163,750	38	18	98.1%	100.0%
\$175,000-\$199,999	71	7.5%	13,359	188,149	189,500	90	22	98.0%	100.0%
\$200,000-\$249,999	81	8.6%	18,209	224,801	224,900	64	25	98.2%	100.0%
\$250,000-\$299,999	52	5.5%	14,091	270,981	269,000	68	39	96.0%	98.2%
\$300,000 and up	65	6.9%	28,170	433,382	389,900	94	40	98.2%	100.0%
All price ranges	942	100.0%	145,656	154,624	130,000	61	26	96.2%	100.0%



**CONTRACTS WRITTEN ANALYSIS**

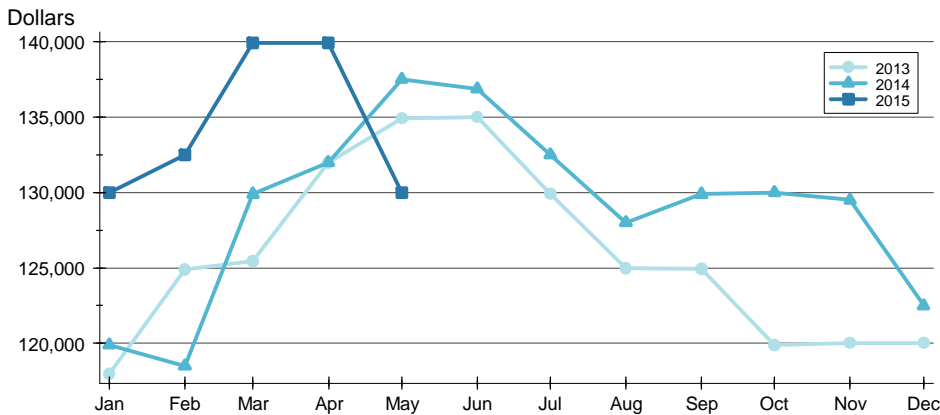
**ENTIRE MLS SYSTEM  
ALL HOMES  
AS OF 6/15/2015**

**AVERAGE PRICE** >>



Month	2013	2014	2015
January	139,018	154,731	155,784
February	140,701	138,304	157,097
March	148,409	150,441	161,862
April	152,900	156,745	162,338
May	160,742	161,706	154,624
June	158,090	163,276	
July	155,055	155,720	
August	148,460	146,649	
September	141,760	160,893	
October	148,085	147,537	
November	151,307	145,373	
December	153,316	142,209	

**MEDIAN PRICE** >>

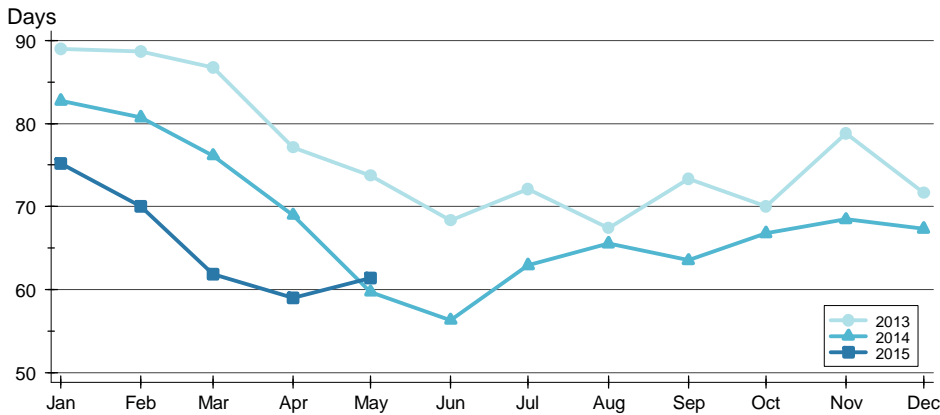


Month	2013	2014	2015
January	118,000	119,900	130,000
February	124,900	118,500	132,500
March	125,450	129,900	139,900
April	132,000	132,000	139,900
May	134,900	137,500	130,000
June	135,000	136,883	
July	129,900	132,500	
August	125,000	128,000	
September	124,950	129,900	
October	119,900	130,000	
November	120,000	129,500	
December	120,000	122,500	

**CONTRACTS WRITTEN ANALYSIS**

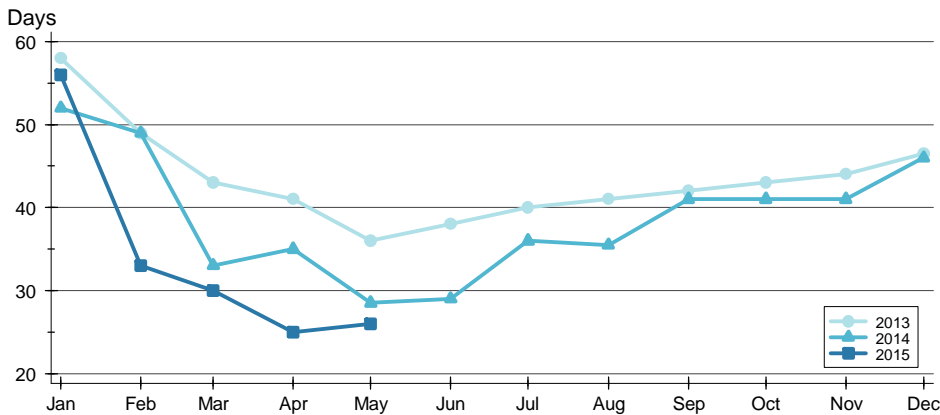
**ENTIRE MLS SYSTEM  
ALL HOMES  
AS OF 6/15/2015**

**AVERAGE DOM** >>



Month	2013	2014	2015
January	89	83	75
February	89	81	70
March	87	76	62
April	77	69	59
May	74	60	61
June	68	56	62
July	72	63	59
August	67	66	65
September	73	64	64
October	70	67	68
November	79	68	67
December	72	67	67

**MEDIAN DOM** >>

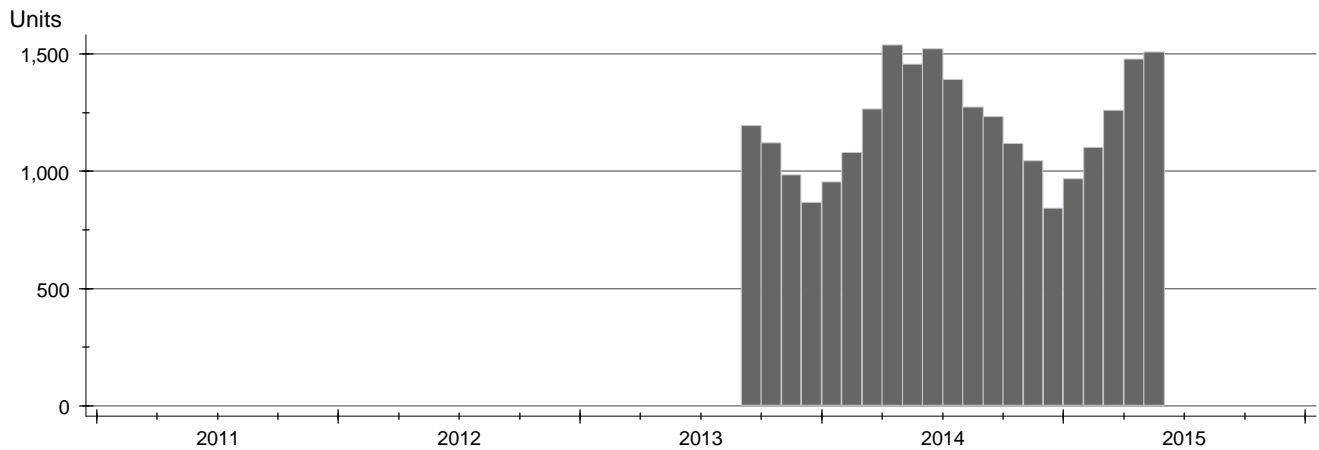


Month	2013	2014	2015
January	58	52	56
February	49	49	33
March	43	33	30
April	41	35	25
May	36	29	26
June	38	29	26
July	40	36	26
August	41	36	26
September	42	41	26
October	43	41	26
November	44	41	26
December	47	46	26

**PENDING CONTRACTS ANALYSIS**

**HISTORY >>**

**ENTIRE MLS SYSTEM  
ALL HOMES  
AS OF 6/15/2015**



**SUMMARY >>**

Summary Statistics for Pending Contracts		End of May		
		2015	2014	Change
Pending Contracts		<b>1,510</b>	1,456	3.7%
Volume (1,000s)		<b>255,380</b>	247,922	3.0%
Average	List Price	<b>169,126</b>	170,276	-0.7%
	Days on Market	<b>59</b>	70	-15.2%
	Percent of Original	<b>98.0%</b>	97.6%	0.4%
Median	List Price	<b>139,900</b>	137,500	1.7%
	Days on Market	<b>25</b>	32	-21.9%
	Percent of Original	<b>100.0%</b>	100.0%	0.0%

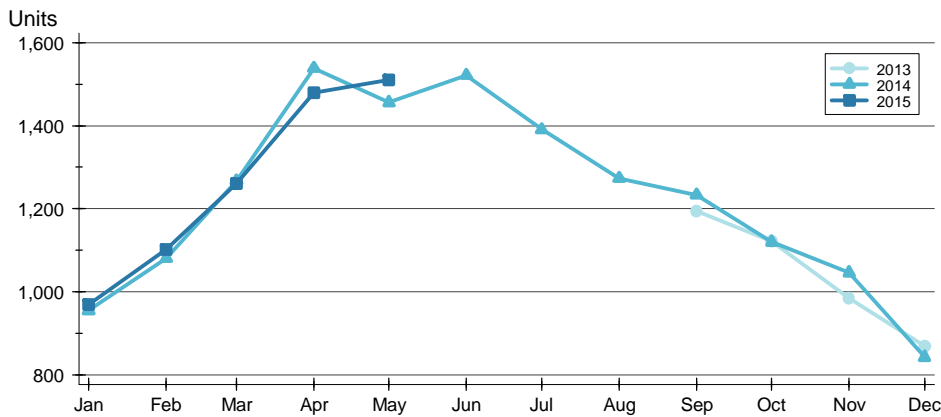
A total of 1,510 listings in South Central Kansas had contracts pending at the end of May, up from 1,456 contracts pending at the end of May 2014.

Pending contracts reflect listings with a contract in place at the end of the month. In contrast, contracts written measures the number of listings put under contract during the month.

**PENDING CONTRACTS ANALYSIS**

**ENTIRE MLS SYSTEM  
ALL HOMES  
AS OF 6/15/2015**

**BY MONTH** >>



Month	2013	2014	2015
January		955	969
February		1,080	1,101
March		1,267	1,261
April		1,539	1,480
May		1,456	1,510
June		1,522	
July		1,391	
August		1,273	
September	1,195	1,233	
October	1,121	1,120	
November	985	1,046	
December	868	842	

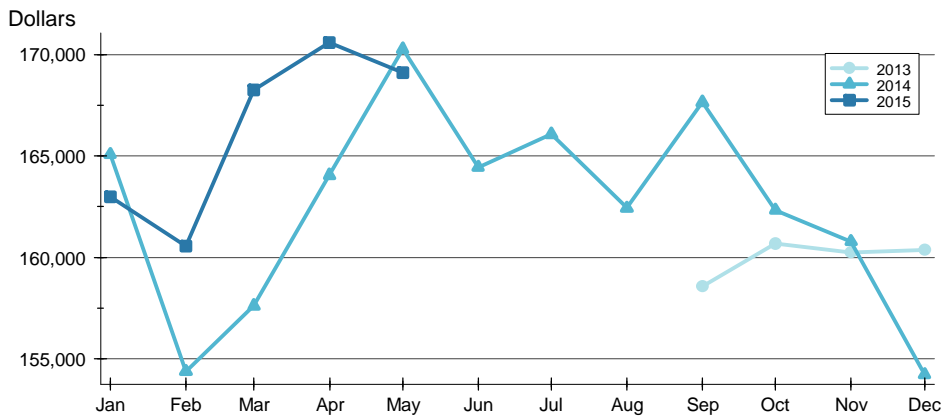
**BY PRICE RANGE** >>

Price Range	Contracts Pending			List Price		Days on Market		List as % Orig.	
	Number	Percent	Volume	Average	Median	Average	Median	Average	Median
Below \$25,000	21	1.4%	389	18,537	20,000	50	21	96.8%	100.0%
\$25,000-\$49,999	74	4.9%	3,038	41,048	43,250	76	43	91.9%	100.0%
\$50,000-\$99,999	319	21.1%	25,041	78,497	79,900	73	37	97.1%	100.0%
\$100,000-\$124,999	174	11.5%	19,900	114,370	114,900	55	20	98.5%	100.0%
\$125,000-\$149,999	235	15.6%	32,146	136,791	136,300	37	14	98.9%	100.0%
\$150,000-\$174,999	167	11.1%	27,273	163,309	162,900	50	18	98.7%	100.0%
\$175,000-\$199,999	118	7.8%	22,126	187,506	187,250	83	27	98.8%	100.0%
\$200,000-\$249,999	142	9.4%	31,761	223,668	222,547	51	19	98.2%	100.0%
\$250,000-\$299,999	90	6.0%	24,515	272,385	269,450	59	26	97.9%	100.0%
\$300,000 and up	133	8.8%	62,935	473,192	399,900	71	31	99.0%	100.0%
All price ranges	1,510	100.0%	255,380	169,126	139,900	59	25	98.0%	100.0%

**PENDING CONTRACTS ANALYSIS**

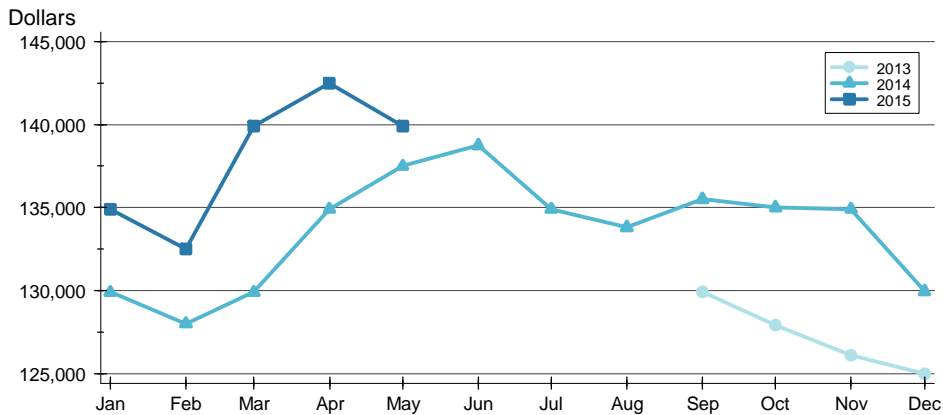
**ENTIRE MLS SYSTEM  
ALL HOMES  
AS OF 6/15/2015**

**AVERAGE PRICE** >>



Month	2013	2014	2015
January	N/A	165,083	162,993
February	N/A	154,377	160,550
March	N/A	157,614	168,272
April	N/A	164,050	170,592
May	N/A	170,276	169,126
June	N/A	164,441	
July	N/A	166,067	
August	N/A	162,437	
September	158,561	167,647	
October	160,673	162,333	
November	160,249	160,785	
December	160,381	154,229	

**MEDIAN PRICE** >>



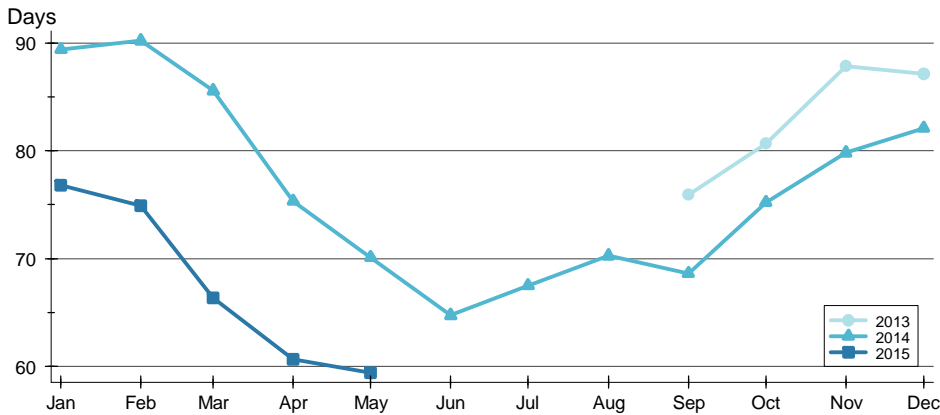
Month	2013	2014	2015
January	N/A	129,900	134,900
February	N/A	128,000	132,500
March	N/A	129,900	139,900
April	N/A	134,900	142,500
May	N/A	137,500	139,900
June	N/A	138,750	
July	N/A	134,900	
August	N/A	133,800	
September	129,900	135,500	
October	127,900	135,000	
November	126,083	134,900	
December	125,000	129,950	



**PENDING CONTRACTS ANALYSIS**

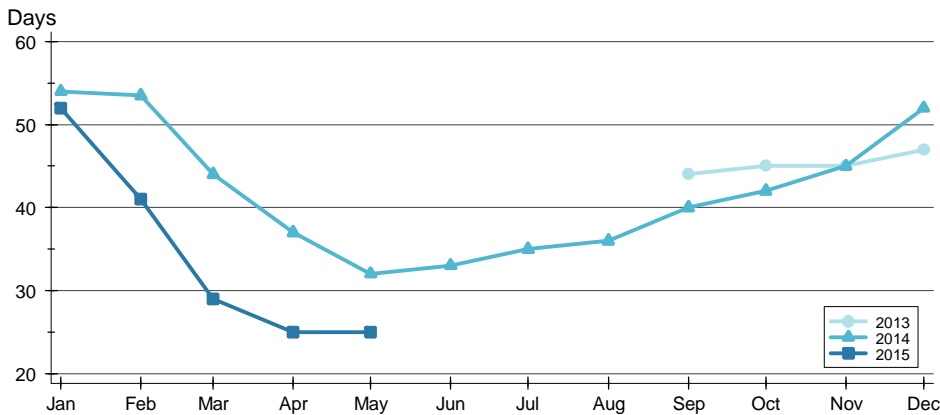
ENTIRE MLS SYSTEM  
ALL HOMES  
AS OF 6/15/2015

**AVERAGE DOM** >>



Month	2013	2014	2015
January	N/A	89	77
February	N/A	90	75
March	N/A	86	66
April	N/A	75	61
May	N/A	70	59
June	N/A	65	
July	N/A	67	
August	N/A	70	
September	76	69	
October	81	75	
November	88	80	
December	87	82	

**MEDIAN DOM** >>



Month	2013	2014	2015
January	N/A	54	52
February	N/A	54	41
March	N/A	44	29
April	N/A	37	25
May	N/A	32	25
June	N/A	33	
July	N/A	35	
August	N/A	36	
September	44	40	
October	45	42	
November	45	45	
December	47	52	



South Central Kansas MLS

## South Central Kansas MLS

170 W. Dewey, Wichita, KS 67202

[www.WichitaRealtors.com](http://www.WichitaRealtors.com)

June 16, 2015

### **South Central Kansas Multiple Listing Service Releases Home Sales Figures for May 2015**

Homes sales in South Central Kansas fell by 6.6% in May compared to the prior year. Sales in May 2015 totaled 909 units, down from 973 in 2014.

Among existing homes, 866 units sold in May, a decrease of 6.5% from 926 units that sold in 2014. The average sale price of existing homes was \$152,436. This represents an increase of 10.4% from the May 2014 average price of \$138,132.

For new construction, 43 sales occurred in May, down from 47 units the prior year, a decrease of 8.5%. The average sale price of new homes in May was \$273,660, down 10.3% from the same period last year.

A total of 942 contracts for sale were written in May 2015, up from 900 in May 2014. This is an increase of 4.7%. Contracts written during the month reflect, in part, sales that will close in the near future.

The inventory of active listings in South Central Kansas stood at 2,864 units at the beginning of May, which is down from 3,101 homes that were on the market at the beginning of May last year. At the current rate of sales, this figure represents 3.2 months' supply of homes on the market.

Note: This information is based on information provided by the REALTORS® of South Central Kansas or South Central Kansas Multiple Listing Service, Inc. for the period indicated. Neither the REALTORS® of South Central Kansas nor the South Central Kansas Multiple Listing Service, Inc. guarantee or are in any way responsible for the accuracy of the data and the data that is provided may not reflect all real estate activity in the market.